

Test Project Session 4

IT SOFTWARE SOLUTIONS FOR BUSINESS

Submitted by:
Independent Test Project Design Team

Contents

This Test Project proposal consists of the following documentation/files:

1. WSC2019_TP09_S4_EN.pdf (Session 4 instructions)
2. Session4-MySQL.sql (SQL Script to create tables with data for MySQL)
3. Session4-MsSQL.sql (SQL Script to create tables with data for Microsoft SQL)

Introduction

In this session, you will be continuing the development of the maintenance management and enterprise asset management system for Kazan Neft. As part of this system you will develop the following sections for the administrators on the Windows platform:

- Purchase Order Management: Controls purchasing of products and services from external suppliers.
- Warehouse Management: Check stock level, manage inter-warehouse transfer.
- Warehouse Summary: Generate reports for specific warehouses.

Description of project and tasks

While developing the test project, please make sure the deliverables conform to the basic guidelines drawn out by different departments at Kazan Neft:

- There should be consistency in using the provided style guide throughout development.
- All required software modules must have applicable and useful validation and error messages as expected by the industry.
- Offer a scrollbar if the number of records on a list or a table that do not fit in the form area comfortably. Hide scrollbars if all content can comfortably be displayed.
- The de-facto standard, ISO compliant date format is YYYY-MM-DD which will be used in this task where applicable.
- Where applicable, use comments in code to have the code more programmer-readable.
- The use of valid and proper naming conventions is expected in all material submitted.
- Any form or report once created should be displayed in the centre of the screen.
- When a form or a dialogue is in focus, operations on other forms need to be suspended.
- Provide appropriate validation and error messages throughout all parts of the system.
- The caption of Delete and Cancel buttons need to be in red to help with accidental mishaps.
- When using colors to differentiate between rows or records, there needs to be visible clarification on the screen as to what they stand for.
- The wireframe diagrams provided as part of this document are only suggestions and the solution produced does not have to be, in any way, mirror what has been pictured.
- Time management is critical to the success of any project and so it is expected of all deliverables to be complete and operational upon delivery.

Instructions to the Competitor

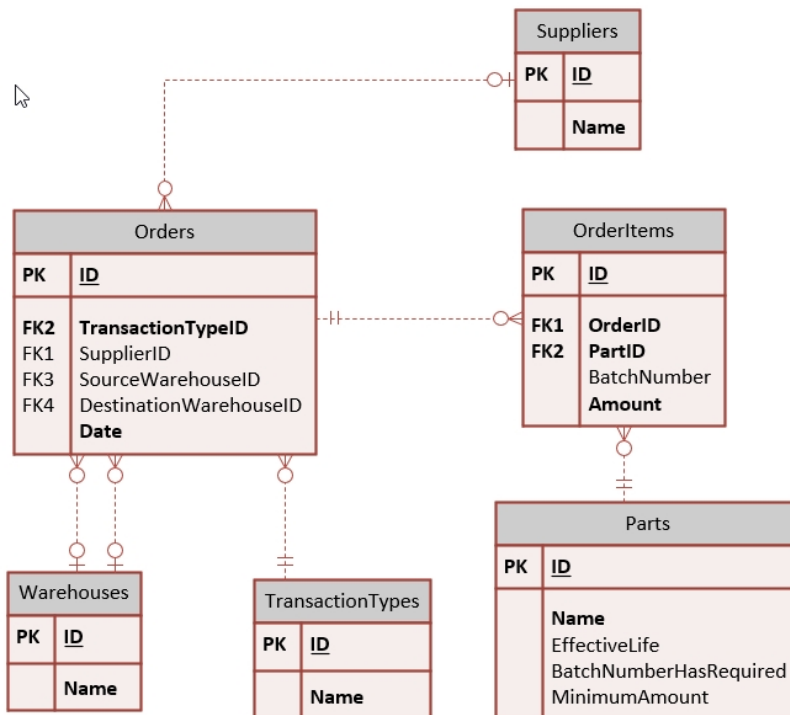
4.1 Creating the Database

Create a database by the name of “Session4” in your desired RDBMS Platform (MySQL or Microsoft SQL Server). This will be the main and only database you will use in this session. In case you are given a database by the same name, you should use the database provided by the administrators.

4.2 Importing Database Structure

Depending on your preferred RDBMS platform, a SQL scripts is made available. The said scripts consist of the database structure and data required to complete the tasks. The data needs to be imported to the database created for this session named "Session4".

As instructed by the designers, the database structure provided for the purpose of this section cannot be altered. This applies to removal of tables, adding or deleting any fields on the tables or of change in their data types.



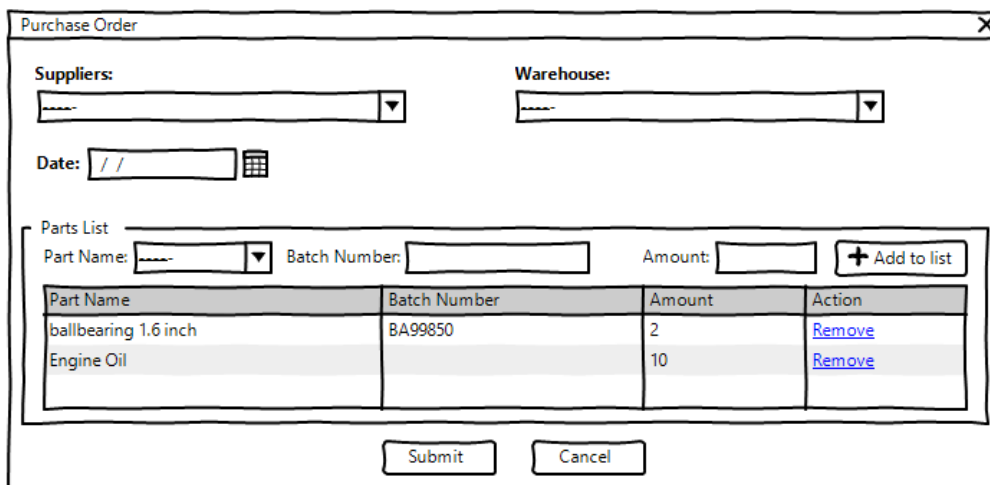
To help further perceive the thinking behind the structure of the database, the database designers provide an Entity-Relationship Diagram (ERD). The aforementioned diagram explains the conceptual and representational model of data used in the database.

Inventory Management						
Purchase Order Management		Warehouse Management		Inventory Report		
Part Name	Transaction Type	Date	Amount	Source	Destination	Actions
Engine Oil	Purchase Order	8/1/2019	20	Castrol	Volka Warehouse	Edit Remove
Brake Fluid	Warehouse Management	8/5/2019	5	Volka Warehouse	Central Warehouse	Edit Remove

4.3 Managing Current Inventory

This is the main form for the application that provides a list of transactions concerning current inventory to the maintenance manager. The following is what is required for this form:

- Three buttons on the top of the form will allow the user to add purchase orders, transfer parts between warehouses and get a summary of activities performed.
- The following fields information to be made available for each of the activities performed on the inventory system:
 - Part Name, Transaction Type, Transaction Date, Amount, Source, Destination
- The order in which the records are displayed needs to be organized as follows:
 - Primary sorting needs to be applied on the date of the transaction where the oldest come first.
 - In case the transactions have the same date, the purchase orders get higher priority.
 - The user may use the list headers to change the display order:
 - By clicking once on the header of any of the fields, the user can switch between descending, and ascending sorting of the said field and can also cancel the user-defined sort order.
 - An arrow on the left of the header title displays the sort order if a custom sort order is applied on the list.
- The value under the field Amount needs to be differentiated using colors as suggested on the wireframe diagram.
 - Used green background color for purchase order management transactions.
- Two buttons next to each record will give the user the option to remove and edit them.
- Removing a record that would make the inventory of a part in a warehouse negative should be prevented displaying an appropriate message to the user.



Purchase Order

Suppliers: Warehouse:

Date:

Parts List

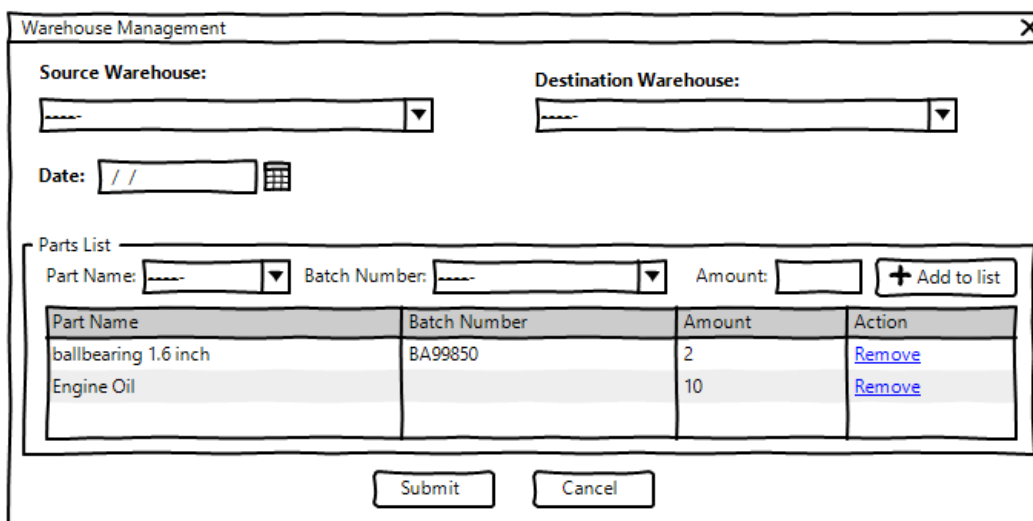
Part Name: Batch Number: Amount:

Part Name	Batch Number	Amount	Action
ballbearing 1.6 inch	BA99850	2	Remove
Engine Oil		10	Remove

4.4 Purchase Orders

The user lands here from the main form to add new purchase orders and to edit current purchase orders:

- To submit a purchase order the client needs to provide the following:
 - Supplier which can be selected from a list already in the database.
 - Warehouse is also populated using a predefined list from the database.
 - Date in which the purchase order has been completed.
 - Parts List which consists of the following:
 - Part name populated by a predefined set of values from the database.
 - The user may use this field to look for the part they need.
 - Batch Number is a unique number that differentiates between different productions of the part:
 - If the part selected in the database has “BatchNumberHasRequired” set to “True”, then a batch number needs to be entered, otherwise any value entered should be ignored and should not be stored on the database.
 - When a batch number is associated with part, the system will treat the part with different batch numbers as individual parts. The inventory for the parts is then calculated based on the pairing of part name and batch number.
 - The list can contain multiple parts with same part name only if they have different batch numbers.
 - Amount is the number of each part that is to be stored as part of the order:
 - This number needs to be of positive decimal value.
 - Same parts with different batch numbers can have different amounts on the list.
- At least one part needs to be added to the order for it to be valid.
- The user may remove parts from the parts list by using a button.
- When the user is editing a transaction, they may not remove parts that would make their inventory for the warehouse negative.



Warehouse Management

Source Warehouse: Destination Warehouse:

Date:

Parts List

Part Name: Batch Number: Amount:

Part Name	Batch Number	Amount	Action
ballbearing 1.6 inch	BA99850	2	Remove
Engine Oil		10	Remove

4.5 Warehouse Management

The maintenance manager can use this part of the system to make changes to currently stored transfers between different warehouse and to submit new transactions of the type.

- To submit a transfer between warehouses the client needs to provide the following:
 - Source Warehouse where the parts are already located at and is populated from the database.
 - Destination Warehouse is also populated from the database and it's the place where the parts will end up at.
 - Date in which the transfer has been completed.
 - Parts List which consists of the following:
 - Part name populated by a predefined set of values from the database.
 - The user may use this field to look for the part.
 - Only parts that are already located in the source warehouse should be displayed in the list.
 - Batch Number is a unique number that differentiates between different productions of the part:
 - If the part selected in the database has "BatchNumberHasRequired" set to "True", then batch numbers for the part needs to be displayed as a drop-down list.
 - When a batch numbers is associated with a part, the system will treat the part with different batch numbers as individual parts. The inventory for the parts is then calculated based on the pairing of part name and batch number.
 - The list can contain multiple parts with same part name only if they have different batch numbers.
 - Amount is the number of each part that is to be stored as part of the transfer:
 - This number needs to be of positive decimal value.
 - Same parts with different batch numbers can have different amounts on the list.
- At least one part needs to be added to the transfer for it to be valid.
- The user may remove parts from the parts list by using a button.
- The system should not allow the inventory for a part in any of the warehouses negative at any stage.
- The system should not allow the source and the destination warehouses to be the same.

Inventory Report
X

Warehouse:

Inventory Type:

Current Stock
 Received Stock
 Out of Stock

Result:

Part Name	Current Stock	Received Stock	Action
ballbearing 1.6 inch	7	20	View Batch Numbers
Engine Oil	5	10	

4.6 Inventory Report

This section of the system will allow the maintenance manager dig deeper into the activities performed on the inventory:

- To generate the desired report, the following needs to be provided:
 - Warehouses are listed for the user to choose from.
 - Inventory Type which defines the type of report required and can be any of these three types:
 - Current Stock which lists the current parts present in the warehouse.
 - Out of Stock which displays the parts that have previously been entered in the warehouse but there are none remaining at this time.
 - Received Stock which is the number that has been recorded to have entered into the warehouse.
- The results of the report need to contain the following information:
 - Part Name which is the name of the part.
 - Current Stock which is the number for the part currently present in the warehouse
 - Received Stock which is the number that has been recorded to have entered into the warehouse.
 - A button for the parts that have batch numbers associated with them will assist the user to view information associated with the batch numbers:
 - A list of all the batch numbers with their current stock and received stock should be displayed to the user.
- When a batch number is associated with a part, the system will treat the part with different batch numbers as individual parts. The inventory for the part is then calculated based on the pairing of part name and batch number.